

YOUR CONTAINERS CAN HELP FEED QUEENSLANDERS IN NEED.



This year we are aiming for a \$500 donation to support Foodbank Queensland through the Containers For Change Scheme. Every \$1 provides 2 meals for those in need, if we reach this goal, our donation will provide 1000 meals! Simply drop any of the containers shown above into the into the collection bin to help us reach our goal!

Foodbank Queensland is the largest hunger relief organisation in the state, supporting 280 charities & more than 197,000 Queenslanders suffering food insecurity each month. Scan the code below for more info.



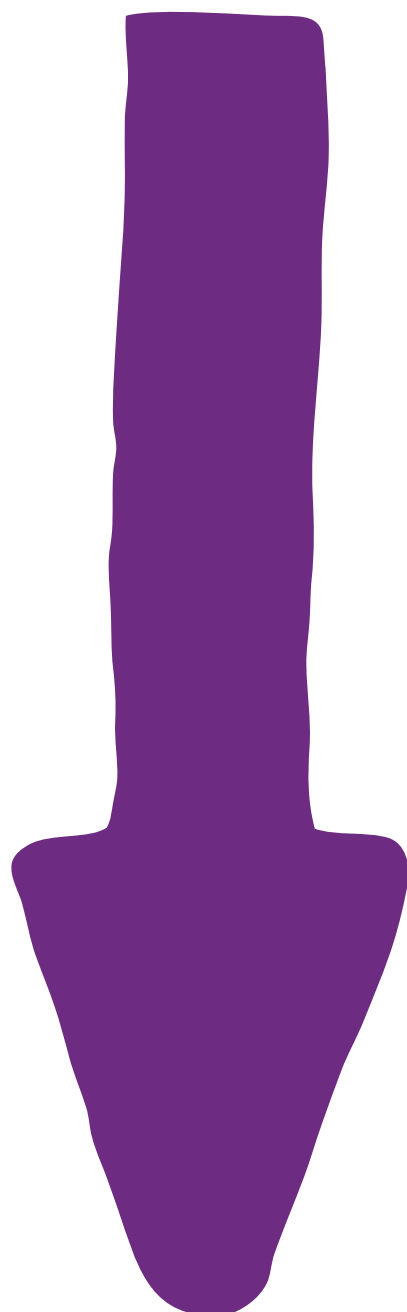
SCAN ME!





**FIGHTING HUNGER
IN AUSTRALIA**

**DONATE YOUR
CONTAINERS
HERE.**



HELP US REACH OUR GOAL!



This year we are supporting Foodbank Queensland through the Containers For Change Scheme.

Every \$1 donated provides 2 meals for those in need. Simply drop any of the containers shown above into the collection bins to help us reach our goal!

Foodbank Queensland is the largest hunger relief organisation in the state, supporting 280 charities & more than 197,000 Queenslanders suffering food insecurity each month.

GOAL!



START

SCAN ME!



foodbankqld.org.au

WHICH CONTAINERS ARE ACCEPTED?



ACCEPTED

Most aluminium, glass, plastic, steel and liquid paperboard beverage containers between 150ml and three litres are eligible for a refund when returned to a container refund point. To be eligible the beverage container must:

- Display the refund mark. This is so that the container refund point operator can see if the container is part of the scheme. Most containers will already have a refund mark for SA and NT and these containers are eligible under Containers for Change. Beverage manufacturers have until 1 December 2019 to display the new refund mark on their containers
- Be an approved container. Some containers are made out of materials that cannot be recycled. These containers may not be approved (by the Queensland Government) as an eligible container as the scheme requires that when a refund is paid on a container that container must be recycled.



NOT ACCEPTED

There are some beverage containers that are not eligible for a refund. Generally excluded containers are those that are less than 150ml and greater than three litres. Other excluded containers include:

- Any plain milk containers or glass containers which have contained wine or pure spirits.
- Containers 1L or more.
- Concentrated/undiluted cordial or syrup containers.
- Sachets above 250ml which have contained wine.
- Registered health tonics.
- Excluded containers, such as plain milk bottles and glass wine bottles, can still be recycled through existing kerbside collection or drop-off services.

